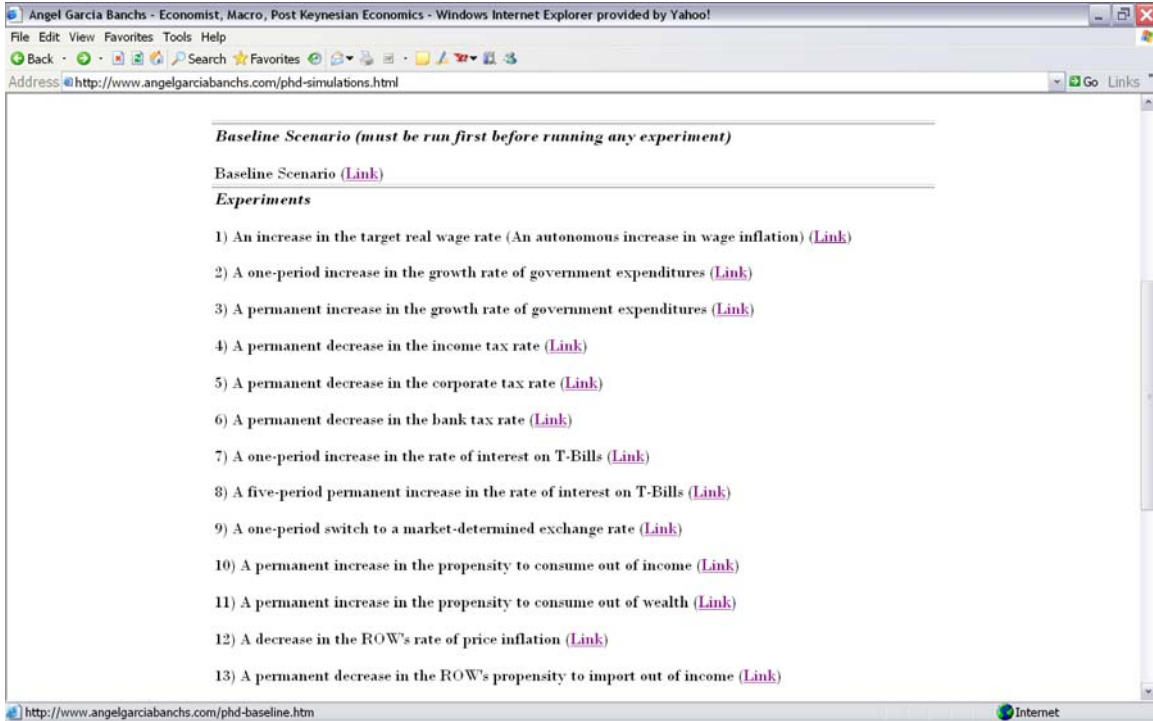


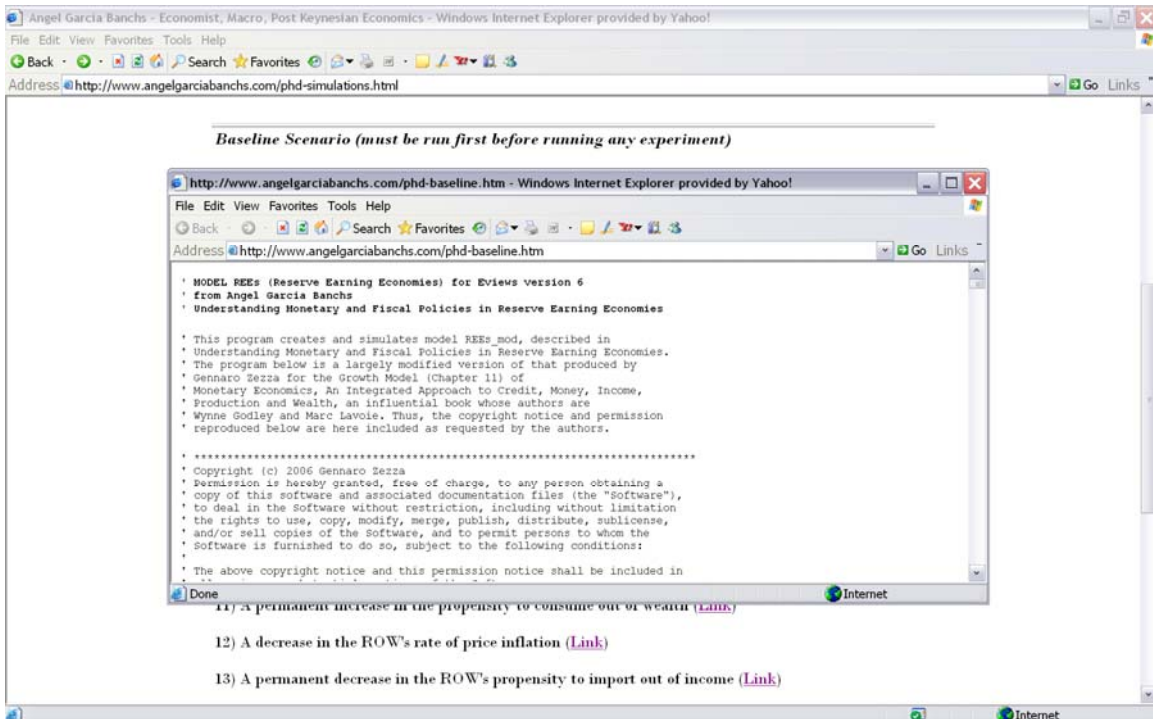
*Manual for Eviews 5.0 and 6.0 (Simulations)*

*Essays on Money, and the Asymmetries of the International Monetary System*

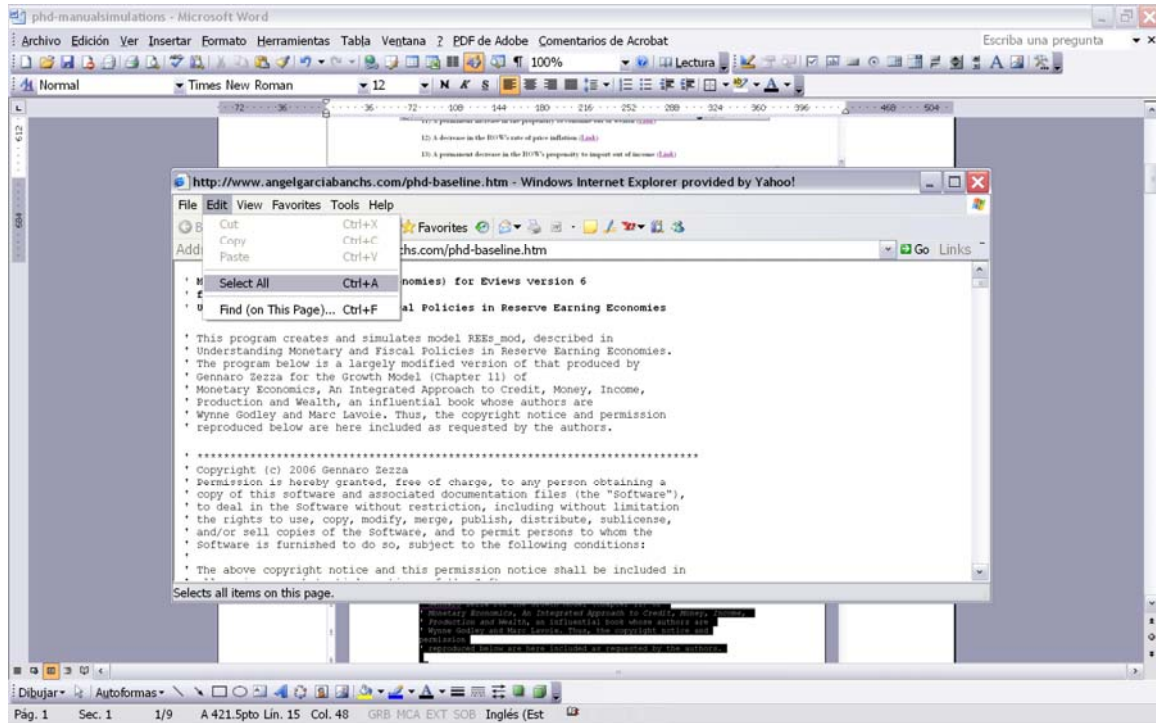
Click on Baseline Scenario



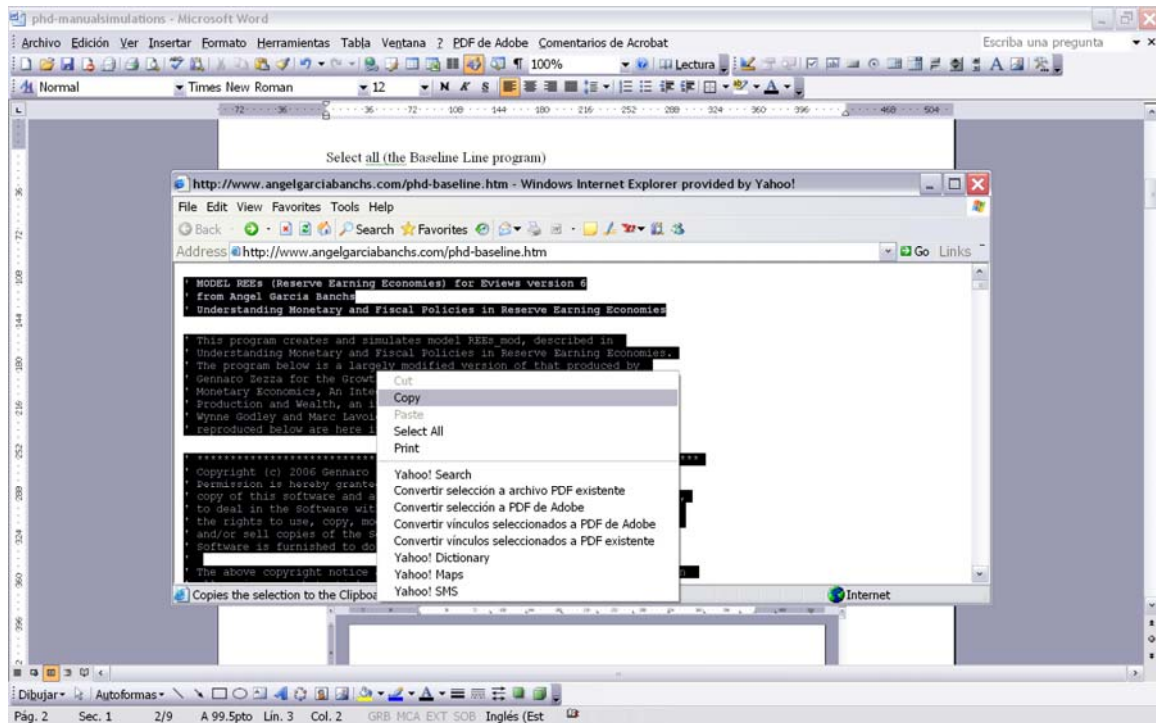
The following window pops with the Baseline scenario



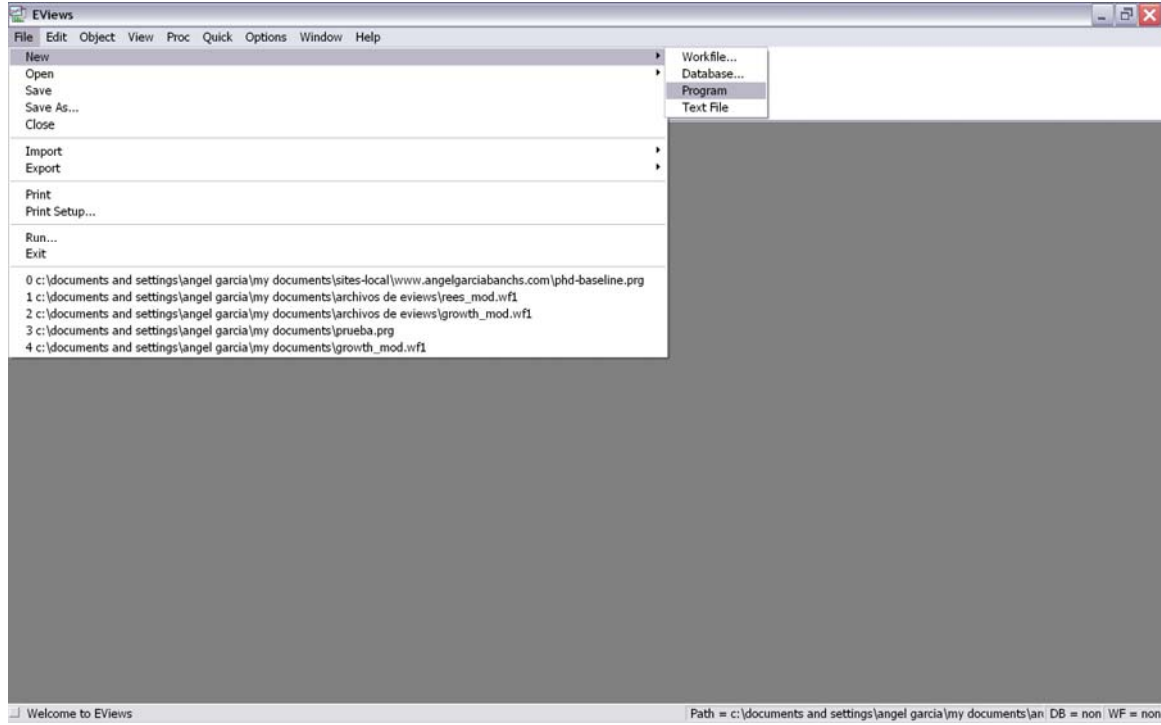
Select all (the Baseline Line program)



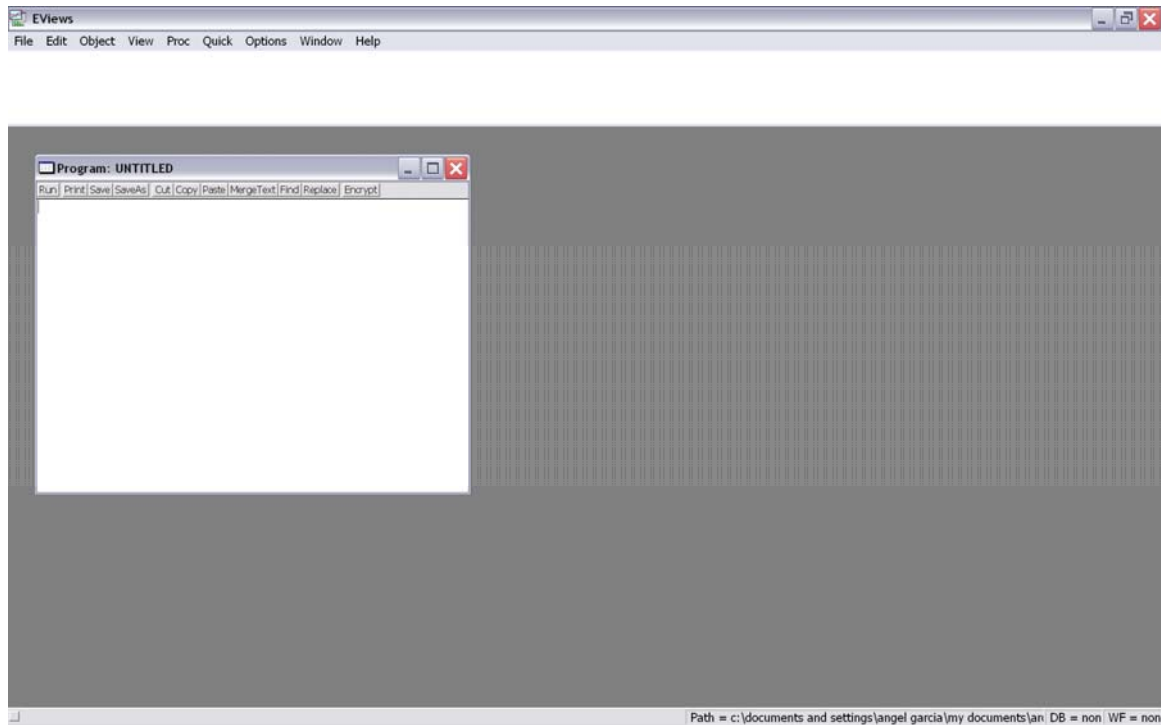
Select copy (the Baseline Line program)



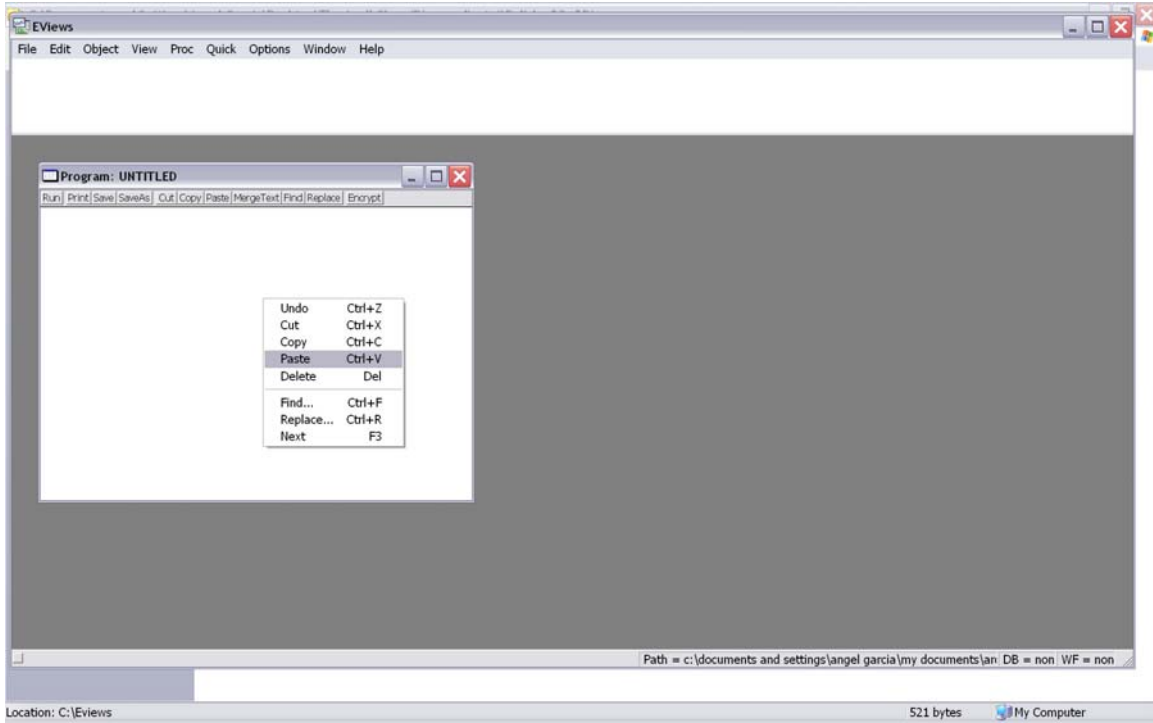
Open EViews 5.0 or 6.0 and choose File, New, Program



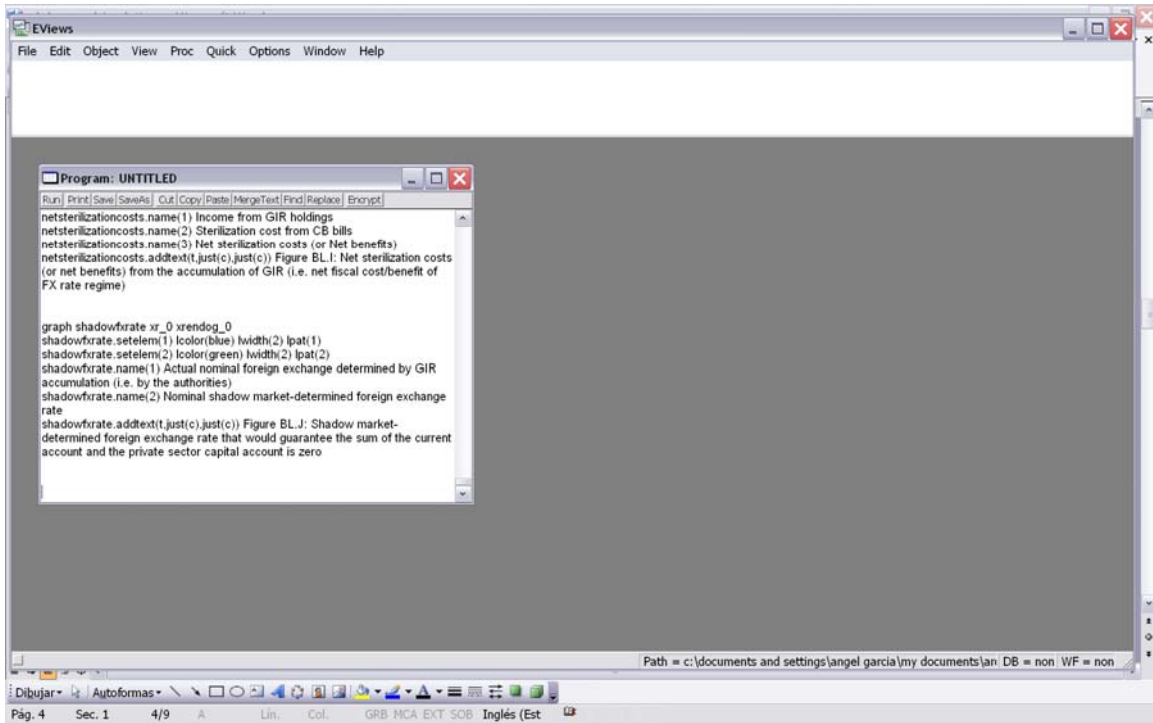
The following window pops up



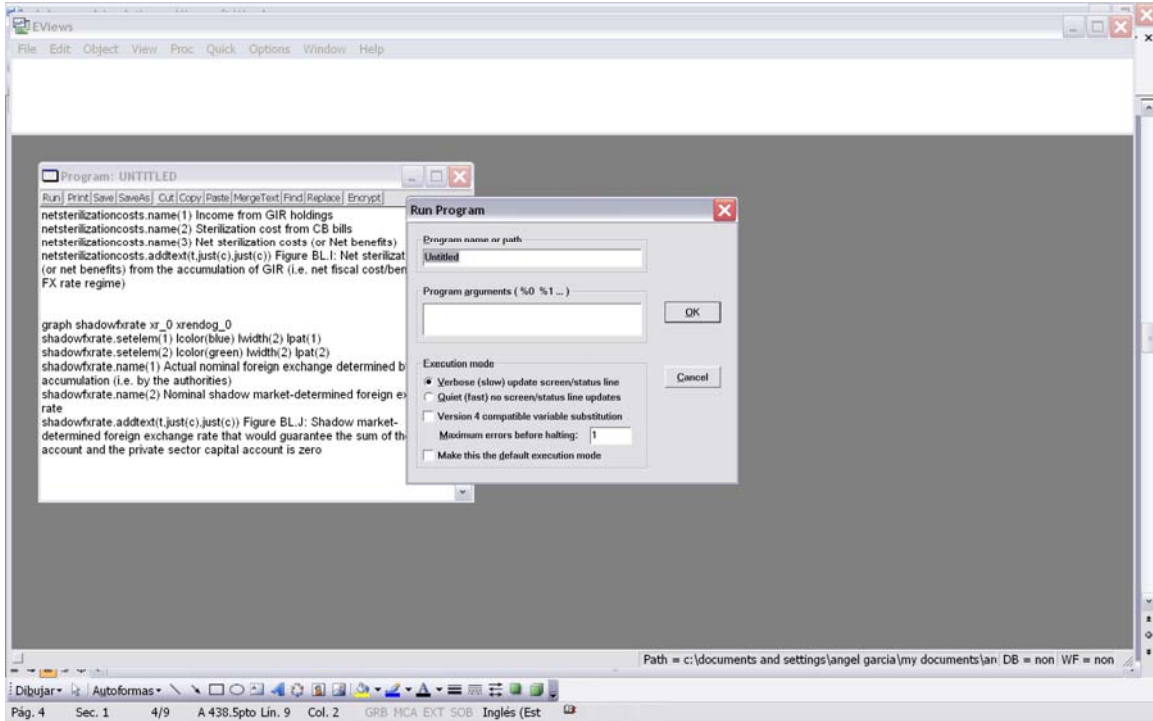
Select paste (to paste the Baseline Line program)



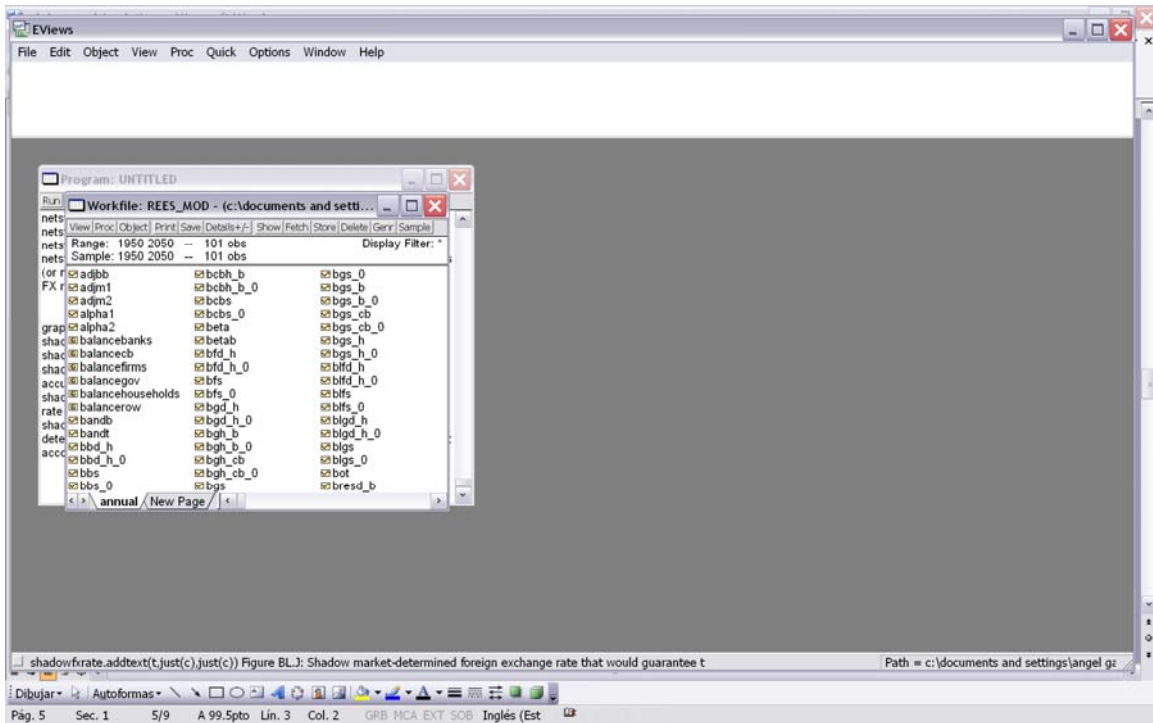
The text of the program appears as follows. Select run (to run the Baseline Line program)



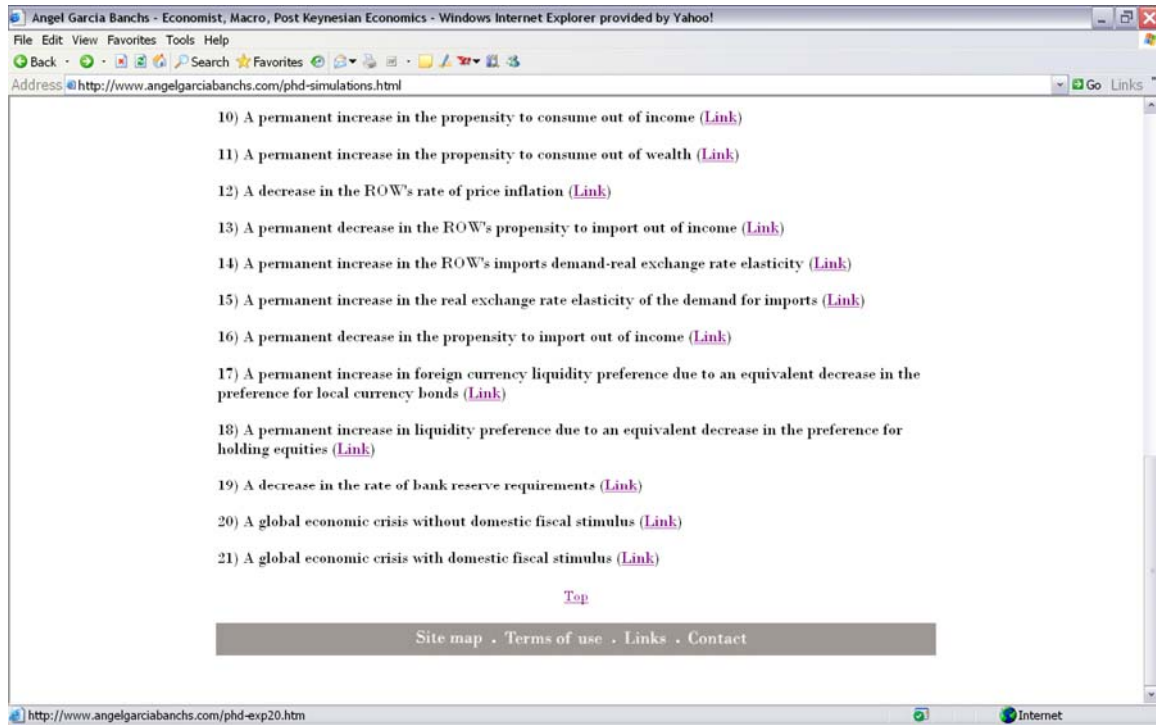
Select OK



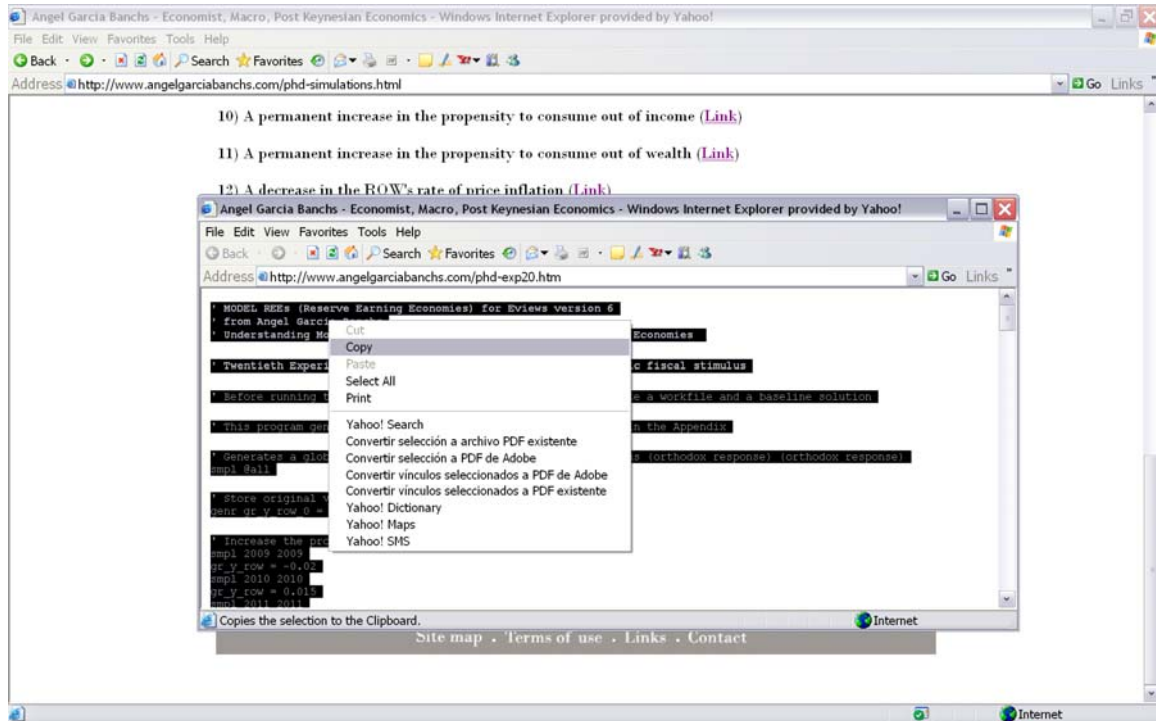
The following info pops up



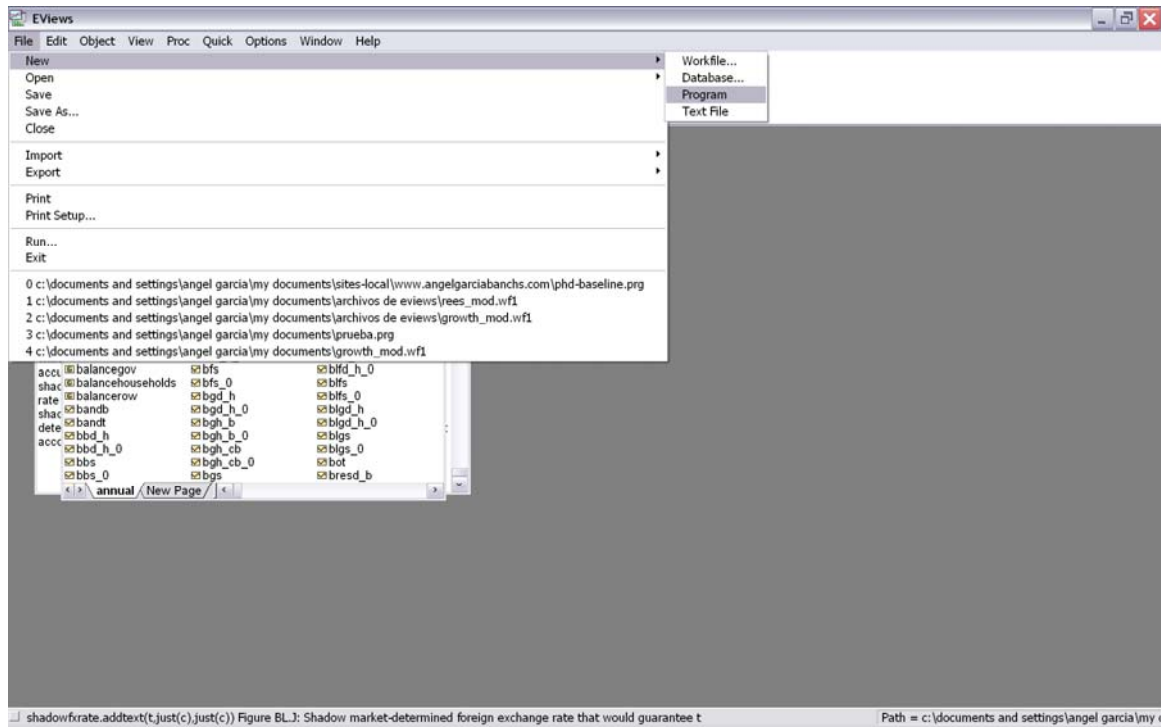
Return to the webpage and look for the experiment you wish to run, say, for instance, Exp 20, click on the link...



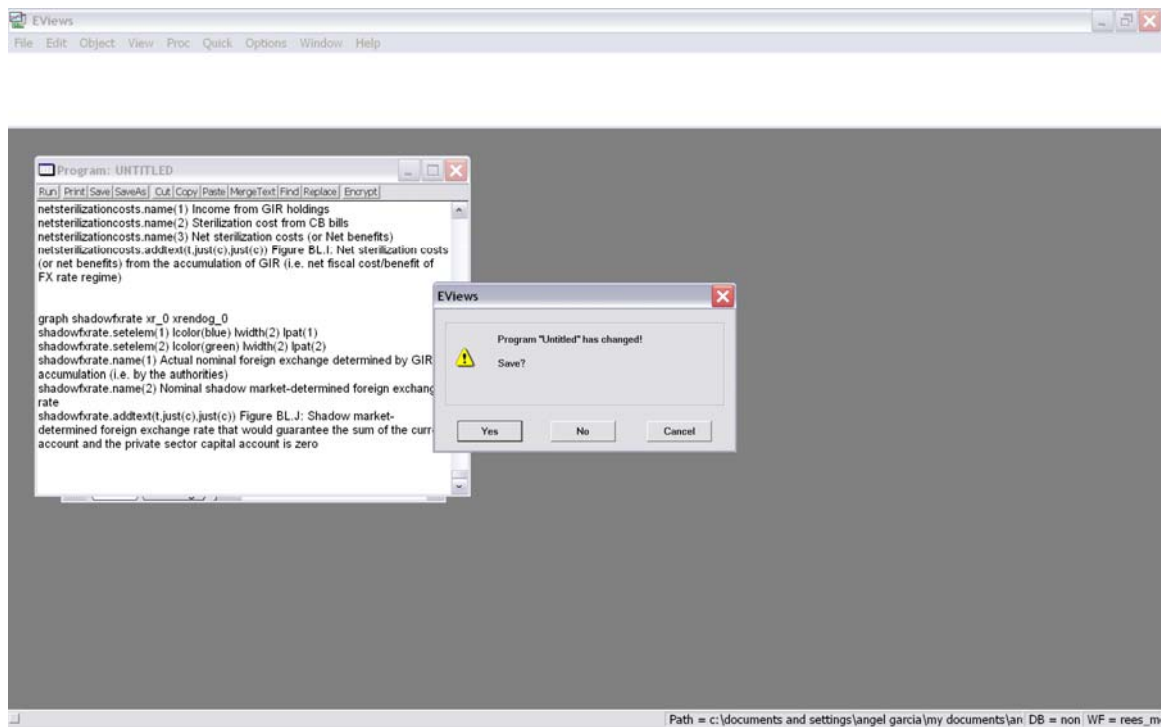
Choose again select all so as to copy the info of the program (experiment)



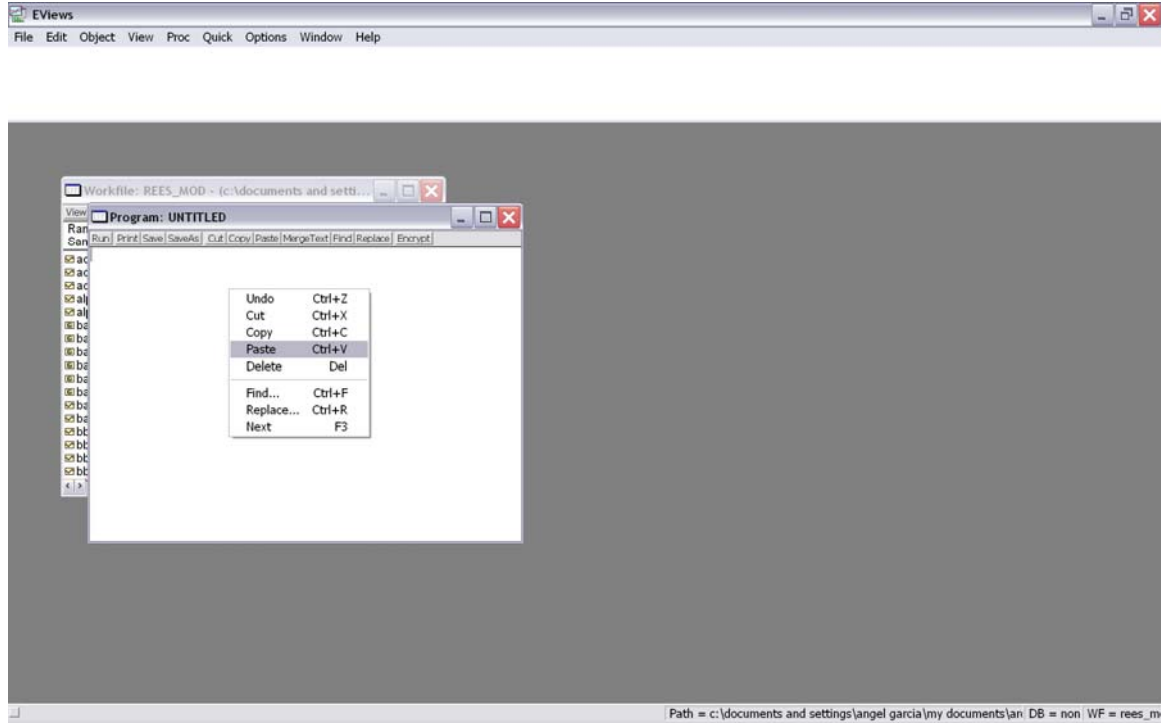
Again, in EViews, choose File, New, Program



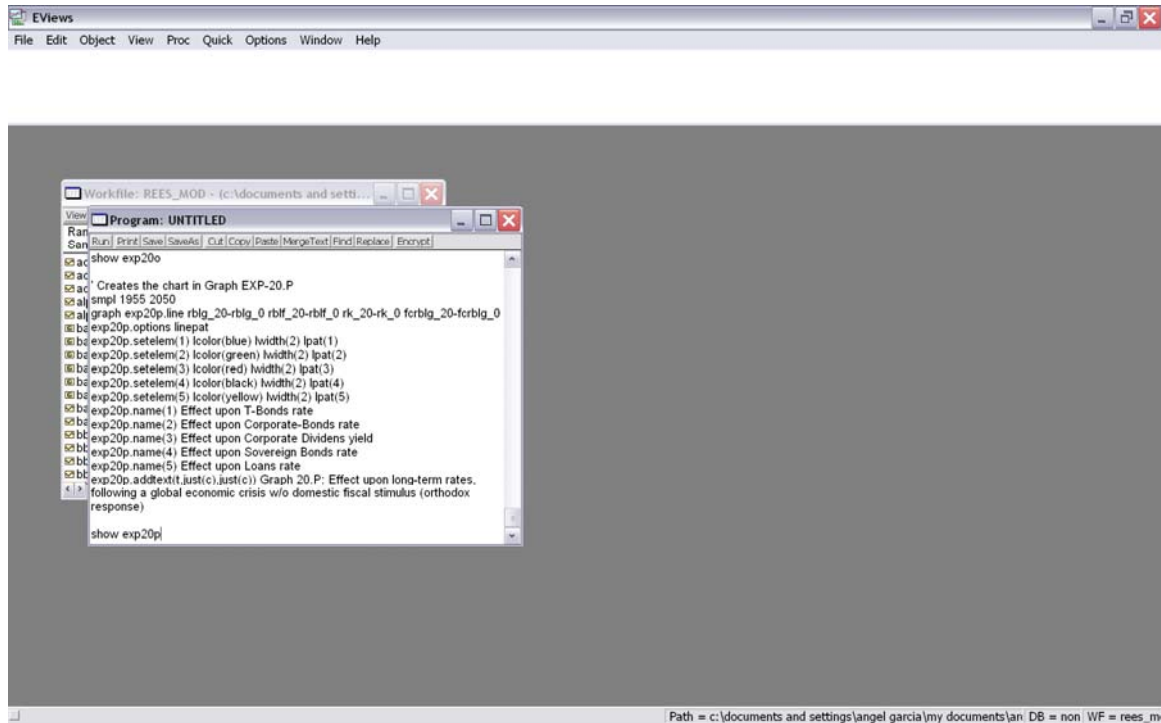
Eviews will ask if you wish to save the previous program, click Yes or No, as you wish



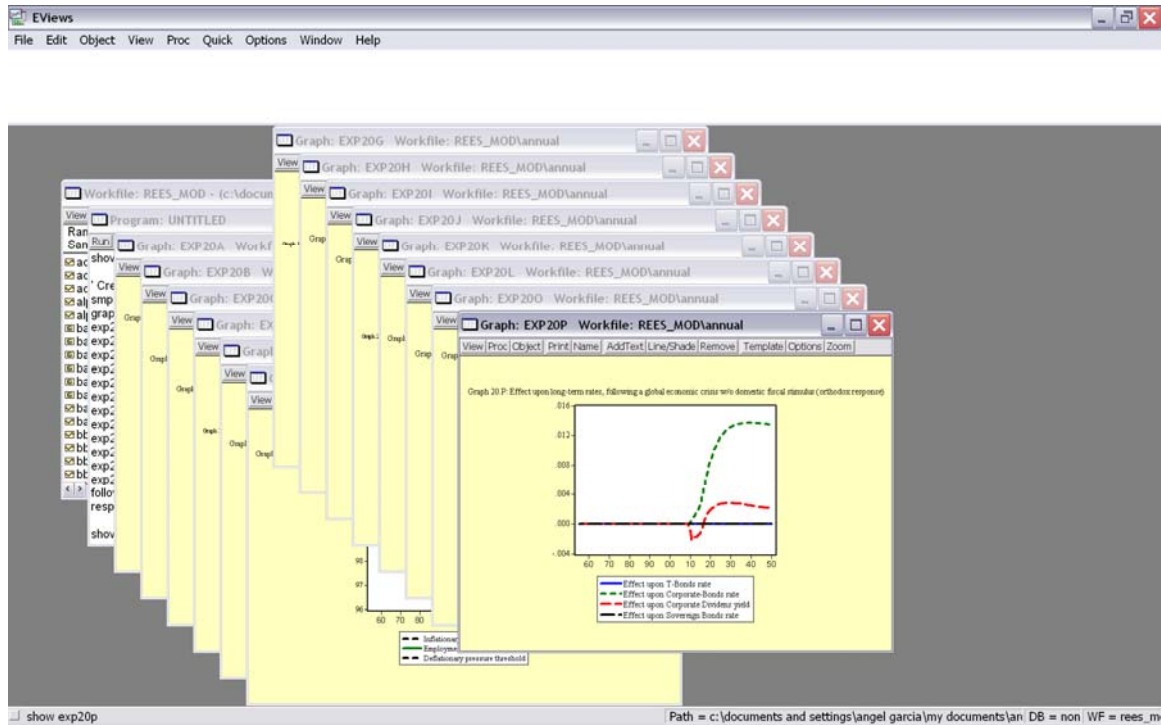
Paste in the EViews program window



Hit run program



Finally, observe the Graphs that will pop up with the results of the simulations associated with the experiment of your choice (as compared with the baseline scenario)



Find Graph Exp 20F to take a look at the effect of the global crisis upon employment when the authorities choose not to intervene (e.g. in the absence of fiscal stimulus plan)

